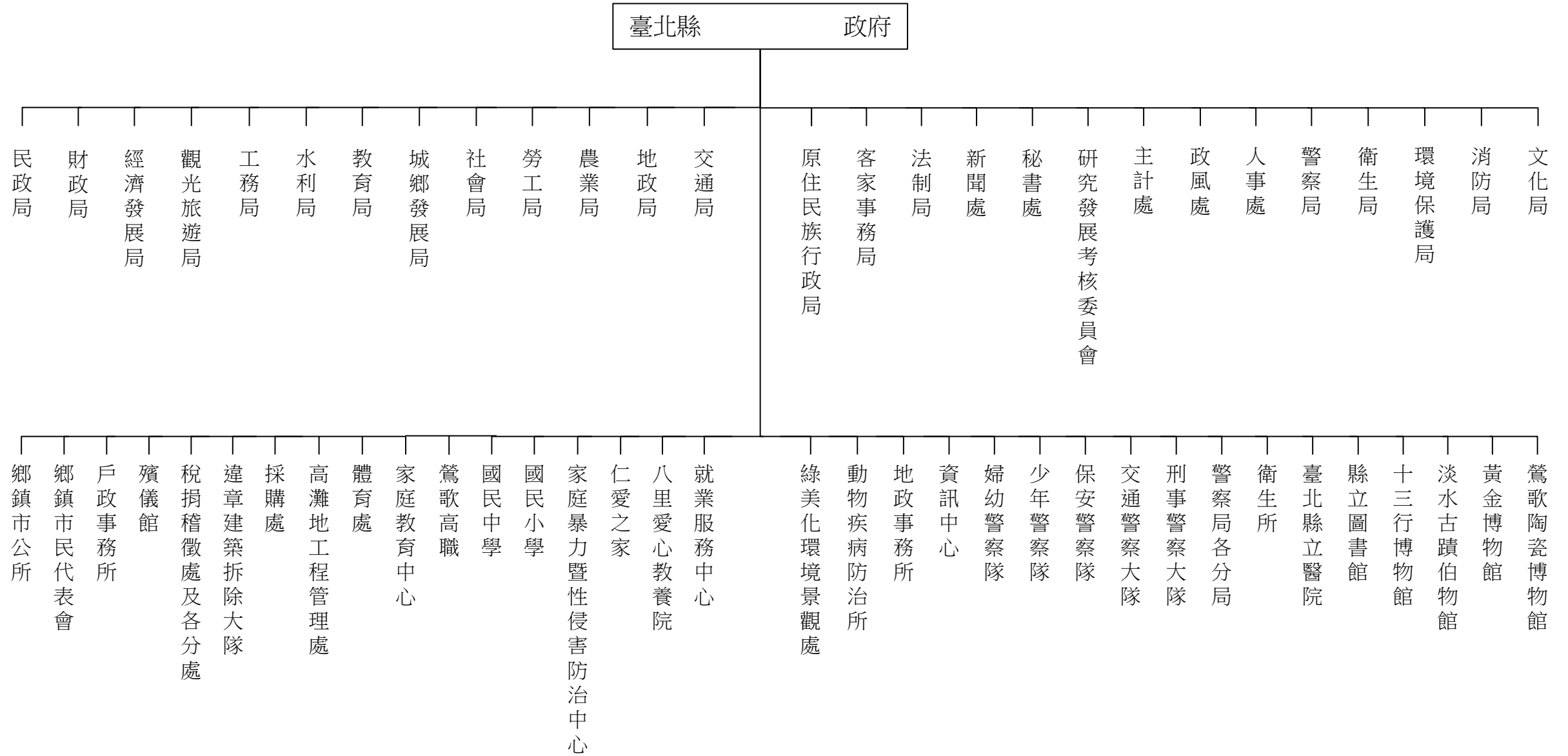


表3-1 本府行政組織 系統及附屬單位

中華民國 98年底



資料來源：本府人事處

表3 - 2、本縣各級機關學校正式編制員額

單位：人

| 年 底 別       | 總 計         | 縣政府               | 稅捐處               | 警察局              | 消防局            | 衛生局及所屬                          | 環境保護局                              | 地政事務所                      | 其他縣屬機關                      |
|-------------|-------------|-------------------|-------------------|------------------|----------------|---------------------------------|------------------------------------|----------------------------|-----------------------------|
| End of Year | Grand Total | County Government | Department of Tax | Bureau of Police | Bureau of Fire | Bureau of Health & Subsidiaries | Bureau of Environmental Sanitation | Land Administration Office | The Other Organic Structure |
| 民國88年底 1999 | 40 424      | 947               | 533               | 7 766            | 616            | 446                             | 182                                | 475                        | 126                         |
| 民國89年底 2000 | 40 141      | 947               | 533               | 5 822            | 658            | 462                             | 202                                | 551                        | 161                         |
| 民國90年底 2001 | 42 019      | 947               | 535               | 6 750            | 882            | 466                             | 202                                | 546                        | 349                         |

| 年 底 別       | 總 計         | 縣議會            | 縣政府               | 稅捐處               | 警察局              | 消防局            | 衛生局及所屬                          | 縣立醫院            | 鄉鎮市衛生所                     |
|-------------|-------------|----------------|-------------------|-------------------|------------------|----------------|---------------------------------|-----------------|----------------------------|
| End of Year | Grand Total | County Council | County Government | Department of Tax | Bureau of Police | Bureau of Fire | Bureau of Health & Subsidiaries | County Hospital | Health Offices of Township |
| 民國91年底 2002 | 42 811      | 40             | 947               | 533               | 7 501            | 1 068          | 500                             | 359             | -                          |
| 民國92年底 2003 | 40 704      | 40             | 1 064             | 432               | 7 501            | 1 068          | 500                             | 165             | -                          |
| 民國93年底 2004 | 42 137      | 40             | 1 058             | 432               | 7 501            | 1 068          | 500                             | 240             | -                          |
| 民國94年底 2005 | 41 803      | 40             | 1 064             | 432               | 7 501            | 1 068          | 500                             | 342             | -                          |
| 民國95年底 2006 | 42 080      | 40             | 1 064             | 432               | 7 501            | 1 286          | 500                             | 342             | -                          |

| 年 底 別       | 總 計         | 縣議會            | 縣政府               | 其他縣屬機關                      | 警察局              | 消防局            | 衛生局及所屬                          | 縣立醫院            | 鄉鎮市衛生所                     |
|-------------|-------------|----------------|-------------------|-----------------------------|------------------|----------------|---------------------------------|-----------------|----------------------------|
| End of Year | Grand Total | County Council | County Government | The Other Organic Structure | Bureau of Police | Bureau of Fire | Bureau of Health & Subsidiaries | County Hospital | Health Offices of Township |
| 民國96年底 2007 | 42 742      | 40             | 22                | 2 368                       | 7 501            | 1 286          | 500                             | 342             | -                          |
| 民國97年底 2008 | 42 817      | 65             | 15                | 2 298                       | 7 127            | 1 600          | 523                             | 342             | -                          |
| 民國98年底 2009 | 44 003      | 65             | 18                | 2 879                       | 7 595            | 1 600          | 175                             | 342             | 319                        |

資料來源：行政院人事行政局地方人事行政處。  
 說明：1.編制員額係指機關內正式教職員編制額。  
 2.自八十九年起資料為預算員額。  
 3.本縣自96年起升格為準直轄市，各局處(如稅捐稽徵處)員額數由縣政府歸入其他縣屬機關。

Table 3 - 2、Personnel Management of Taipei county、School & Subsidiaries

Unit:Person

| 縣議會            | 各鄉鎮市公所           | 鄉鎮市衛生所                     | 各戶政事務所                        | 其他鄉鎮市所屬機關                               | 鄉鎮市民代表會                | 縣市鄉鎮營事業機構                   | 縣立各國民中學            | 縣立各國民小學            | 高中(職)                          |
|----------------|------------------|----------------------------|-------------------------------|---|------------------------|-----------------------------|--------------------|--------------------|--------------------------------|
| County Council | Township Offices | Health Offices of Township | Household Registration Office | The Other Organic Structure of Township | Parliament of Township | Municipal Owned Enterprises | Junior High School | Elementary Schools | Senior High(Vocational) School |
| 30             | 2 138            | 404                        | 843                           | 486                                     | 72                     | 6                           | 9 775              | 15 433             | 146                            |
| 40             | 2 296            | 396                        | 846                           | 458                                     | 72                     | 6                           | 10 201             | 16 344             | 146                            |
| 40             | 2 106            | 393                        | 844                           | 729                                     | 95                     | 4                           | 10 512             | 16 447             | 172                            |

| 環境保護局                              | 地政事務所                      | 各戶政事務所                        | 其他縣屬機關                      | 鄉鎮市民代表會                | 各鄉鎮市公所           | 其他鄉鎮市所屬機關                               | 縣市鄉鎮營事業機構                   | 高中(職)                          | 縣立各國民中學            | 縣立各國民小學            |
|------------------------------------|----------------------------|-------------------------------|-----------------------------|------------------------|------------------|---|-----------------------------|--------------------------------|--------------------|--------------------|
| Bureau of Environmental Sanitation | Land Administration Office | Household Registration Office | The Other Organic Structure | Parliament of Township | Township Offices | The Other Organic Structure of Township | Municipal Owned Enterprises | Senior High(Vocational) School | Junior High School | Elementary Schools |
| 202                                | 533                        | 797                           | 364                         | 95                     | 2 604            | -                                       | -                           | 2 735                          | 7 993              | 16 540             |
| 202                                | 483                        | 753                           | 314                         | 74                     | 2 662            | 2                                       | -                           | 2 700                          | 7 396              | 15 348             |
| 202                                | 481                        | 762                           | 375                         | 105                    | 2 766            | -                                       | -                           | 2 756                          | 7 749              | 16 102             |
| 202                                | 479                        | 727                           | 378                         | 97                     | 2 765            | 18                                      | -                           | 2 719                          | 7 766              | 15 705             |
| 202                                | 478                        | 727                           | 408                         | 98                     | 2 775            | 25                                      | -                           | 2 691                          | 7 764              | 15 747             |

| 環境保護局                              | 地政事務所                      | 各戶政事務所                        | 鄉鎮市民代表會                | 各鄉鎮市公所           | 其他鄉鎮市所屬機關                               | 縣市鄉鎮營事業機構                   | 高中(職)                          | 縣立各國民中學            | 縣立各國民小學            |
|------------------------------------|----------------------------|-------------------------------|------------------------|------------------|---|-----------------------------|--------------------------------|--------------------|--------------------|
| Bureau of Environmental Sanitation | Land Administration Office | Household Registration Office | Parliament of Township | Township Offices | The Other Organic Structure of Township | Municipal Owned Enterprises | Senior High(Vocational) School | Junior High School | Elementary Schools |
| 197                                | 484                        | 715                           | 98                     | 2 764            | 25                                      | -                           | 2 723                          | 7 875              | 15 802             |
| 227                                | 511                        | 765                           | 97                     | 2 763            | 26                                      | -                           | 2 733                          | 7 963              | 15 762             |
| 303                                | 526                        | 784                           | 96                     | 2 759            | 48                                      | -                           | 2 748                          | 8 030              | 15 716             |

Source：Central Personnel Administration Department of Local Personnel Affairs，Executive Yuan

表3-3、本縣各級機關學校員工總人數

單位：人

| 年底別         | 總計          | 政務人員                | 民選機關首長        | 職員     | 校長及教師               | 民意代表             | 駕駛     |
|-------------|-------------|---------------------|---------------|--------|---------------------|------------------|--------|
| End of Year | Grand Total | Political Appointee | Elected Mayor | Staff  | Principal & Teacher | Elected Official | Driver |
| 民國88年底 1999 | 50 926      | 2                   | 30            | 13 405 | 21 859              | 526              | 107    |
| 民國89年底 2000 | 54 131      | 2                   | 30            | 13 749 | 22 851              | 525              | 88     |

| 年底別         | 總計          | 民意代表             | 正式職員 Formal Staff |                     |        |                     | 清潔隊員         |
|-------------|-------------|------------------|-------------------|---------------------|--------|---------------------|--------------|
|             |             |                  | 民選機關首長            | 政務人員                | 職員     | 校長及教師               |              |
| End of Year | Grand Total | Elected Official | Elected Mayor     | Political Appointee | Staff  | Principal & Teacher | Clean Worker |
| 民國90年底 2001 | 55 065      | 513              | 29                | 2                   | 14 919 | 24 049              | 3 119        |

| 年底別及機關類別                   | 總計          | 正式職員 Formal Staff   |               |        |                     | 測量助理                | 清潔隊員         |
|----------------------------|-------------|---------------------|---------------|--------|---------------------|---------------------|--------------|
|                            |             | 政務人員                | 民選機關首長        | 職員     | 校長及教師               |                     |              |
| End of Year & Organization | Grand Total | Political Appointee | Elected Mayor | Staff  | Principal & Teacher | Surveying Assistant | Clean Worker |
| 民國91年底 2002                | 56 335      | 2                   | 30            | 15 086 | 24 778              | 162                 | 3 569        |
| 民國92年底 2003                | 54 735      | 1                   | 30            | 14 969 | 24 611              | 185                 | 3 508        |
| 民國93年底 2004                | 54 859      | 1                   | 29            | 14 811 | 24 199              | 194                 | 3 467        |
| 民國94年底 2005                | 54 003      | 1                   | 28            | 14 814 | 23 534              | 203                 | 3 727        |
| 民國95年底 2006                | 55 612      | 2                   | 28            | 15 550 | 23 332              | 194                 | 4 269        |
| 民國96年底 2007                | 57 169      | 4                   | 30            | 15 751 | 23 120              | 194                 | 4 299        |
| 民國97年底 2008                | 57 780      | 8                   | 26            | 16 573 | 22 964              | 257                 | 4 316        |

Table 3-3、Total Personnel of Taipei County & Subsidiaries

Unit:Person

| 技工             | 工友            | 正式工員                         | 駐衛警察           | 聘用人員            | 約僱人員               | 臨編人員        | 臨時員工            |
|----------------|---------------|------------------------------|----------------|-----------------|--------------------|-------------|-----------------|
| Skilled Worker | Manual Worker | Formal Staff & Manual Worker | Security Guard | Special Service | Contract Employees | Extra Staff | Temporary Staff |
| 2 364          | 1 887         | -                            | 6              | 281             | 2 185              | 14          | 8 260           |
| 3 433          | 1 862         | -                            | 6              | 271             | 2 181              | 14          | 9 119           |

| 職工 Worker                |               |                              | 駐衛警察           | 聘用人員            | 約僱人員               | 臨編人員        | 臨時員工            |
|--------------------------|---------------|------------------------------|----------------|-----------------|--------------------|-------------|-----------------|
| 技工(含駕駛)                  | 工友            | 正式工員                         |                |                 |                    |             |                 |
| Skilled Worker(& Driver) | Manual Worker | Formal Staff & Manual Worker | Security Guard | Special Service | Contract Employees | Extra Staff | Temporary Staff |
| 811                      | 1 934         | -                            | 6              | 298             | 1 721              | 14          | 7 650           |

| 職工 Worker                   |               |                              | 駐衛警察           | 聘用人員            | 約僱人員               | 臨編人員              | 臨時員工            |
|-----------------------------|---------------|------------------------------|----------------|-----------------|--------------------|-------------------|-----------------|
| 技工(含駕駛)                     | 工友            | 正式工員                         |                |                 |                    |                   |                 |
| Technical Worker (& Driver) | Manual Worker | Formal Staff & Manual Worker | Security Guard | Special Service | Contract Employees | Provisional Staff | Temporary Staff |
| 570                         | 1 973         | -                            | 30             | 304             | 1 756              | 16                | 8 059           |
| 560                         | 1 647         | -                            | 82             | 269             | 1 429              | -                 | 7 444           |
| 602                         | 1 856         | -                            | 82             | 276             | 1 367              | -                 | 7 975           |
| 539                         | 1 800         | -                            | 40             | 237             | 1 325              | 612               | 7 757           |
| 488                         | 1 730         | -                            | 40             | 237             | 1 278              | 612               | 7 852           |
| 496                         | 1 663         | -                            | 32             | 273             | 1 344              | 1 886             | 8 077           |
| 490                         | 1 645         | -                            | 24             | 230             | 1 268              | 1 904             | 8 075           |

表3-3、本縣各級機關學校員工總人數(續)

單位：人

| 年底別及機關類別<br>End of Year & Organization                | 總計<br>Grand Total | 正式職員 Formal Staff           |                         |             |                              | 測量助理<br>Surveying Assistant | 清潔隊員<br>Clean Worker |
|---|-------------------|-----------------------------|-------------------------|-------------|------------------------------|-----------------------------|----------------------|
|   |                   | 政務人員<br>Political Appointee | 民選機關首長<br>Elected Mayor | 職員<br>Staff | 校長及教師<br>Principal & Teacher |                             |                      |
| 民國98年底 2009   | 58 918            | 19                          | 25                      | 17 751      | 22 730                       | 194                         | 4 386                |
| 縣議會<br>County Council                                 | 87                | -                           | -                       | 46          | -                            | -                           | -                    |
| 縣政府<br>County Government                              | 18                | 2                           | 1                       | 15          | -                            | -                           | -                    |
| 稅捐稽徵處<br>Department of Tax                            | 585               | -                           | -                       | 462         | -                            | -                           | -                    |
| 警察局<br>Bureau of Police                               | 7 902             | -                           | -                       | 7 513       | -                            | -                           | -                    |
| 消防局<br>Bureau of fire                                 | 1 480             | -                           | -                       | 1 456       | -                            | -                           | -                    |
| 衛生局及所屬<br>Bureau of Health & Subsidiaries             | 301               | 1                           | -                       | 148         | -                            | -                           | -                    |
| 縣立醫院<br>County Hospital                               | 236               | -                           | -                       | 219         | -                            | -                           | -                    |
| 鄉鎮市衛生所<br>Health Offices of Township                  | 409               | -                           | -                       | 362         | -                            | -                           | -                    |
| 環境保護局<br>Bureau of Environmental Sanitation           | 578               | 1                           | -                       | 230         | -                            | -                           | -                    |
| 地政事務所<br>Land Administration Office                   | 954               | -                           | -                       | 479         | -                            | 128                         | -                    |
| 戶政事務所<br>Household Registration Office                | 813               | -                           | -                       | 717         | -                            | -                           | -                    |
| 其他縣屬機關<br>The Other Organic Structure                 | 4 248             | 15                          | -                       | 2 005       | -                            | 66                          | -                    |
| 鄉鎮市民代表會<br>Parliament of Township                     | 189               | -                           | -                       | 90          | -                            | -                           | -                    |
| 鄉鎮市區公所<br>Township Offices                            | 13 238            | -                           | 24                      | 1 907       | -                            | -                           | 3 702                |
| 鄉鎮市公所所屬機關<br>The Other Organic Structure of Township  | 1 593             | -                           | -                       | 491         | -                            | -                           | 684                  |
| 高中(職)<br>Senior High(Vocational)(Combine High School) | 2 786             | -                           | -                       | 267         | 2 374                        | -                           | -                    |
| 國民中學<br>Junior High School                            | 7 395             | -                           | -                       | 567         | 6 318                        | -                           | -                    |
| 國民小學(含幼稚園)<br>Elementary Schools                      | 16 106            | -                           | -                       | 777         | 14 038                       | -                           | -                    |

Table3-3、Total Personnel of Taipei County & Subsidiaries

(Cont.)

Unit:Person

| 職工 Worker                              |                     |                                      | 駐衛警察<br>Security Guard | 聘用人員<br>Special Service | 約僱人員<br>Contract Employees | 臨編人員<br>Provisional Staff | 臨時員工<br>Temporary Staff |
|--|---------------------|--------------------------------------|------------------------|-------------------------|----------------------------|---------------------------|-------------------------|
| 技工(含駕駛)<br>Technical Worker (& Driver) | 工友<br>Manual Worker | 正式工具<br>Formal Staff & Manual Worker |                        |                         |                            |                           |                         |
| 489                                    | 1 596               | -                                    | 31                     | 281                     | 1 321                      | 2 020                     | 8 075                   |
| 5                                      | 6                   | -                                    | 7                      | -                       | 19                         | -                         | 4                       |
| -                                      | -                   | -                                    | -                      | -                       | -                          | -                         | -                       |
| 6                                      | 16                  | -                                    | -                      | 4                       | 88                         | -                         | 9                       |
| 35                                     | 194                 | -                                    | -                      | 9                       | 151                        | -                         | -                       |
| 9                                      | 15                  | -                                    | -                      | -                       | -                          | -                         | -                       |
| 11                                     | 19                  | -                                    | -                      | -                       | 8                          | -                         | 114                     |
| 6                                      | 11                  | -                                    | -                      | -                       | -                          | -                         | -                       |
| 2                                      | 17                  | -                                    | -                      | -                       | 13                         | 15                        | -                       |
| 8                                      | 10                  | -                                    | -                      | -                       | 46                         | -                         | 283                     |
| 12                                     | 33                  | -                                    | -                      | 13                      | 11                         | -                         | 278                     |
| -                                      | 51                  | -                                    | -                      | -                       | -                          | 1                         | 44                      |
| 77                                     | 62                  | -                                    | -                      | 241                     | 639                        | 292                       | 851                     |
| 24                                     | 22                  | -                                    | -                      | -                       | -                          | 7                         | 46                      |
| 189                                    | 117                 | -                                    | 24                     | 8                       | 207                        | 1 466                     | 5 594                   |
| -                                      | -                   | -                                    | -                      | -                       | -                          | 189                       | 229                     |
| 14                                     | 63                  | -                                    | -                      | -                       | 18                         | -                         | 50                      |
| 47                                     | 238                 | -                                    | -                      | -                       | 39                         | 22                        | 164                     |
| 44                                     | 722                 | -                                    | -                      | 6                       | 82                         | 28                        | 409                     |

資料來源：行政院人事行政局地方人事行政處。

說明：臨時人員內含代課老師；教師係指專任教師，兼任教師不計。

表3-4、本縣各級機關學校公教人員職等別

單位：人

| 年 底 別<br>End of Year | 總 計<br>Grand Total | 簡 薦 委 任 (派) 人員<br>Ranking Servant |                               |                                  |                                |                 | 警 察 人 員      |                         |
|----------------------|--------------------|-----------------------------------|-------------------------------|----------------------------------|--------------------------------|-----------------|--------------|-------------------------|
|                      |                    | 合 計<br>Total                      | 簡任(派)<br>Selected Appointment | 薦任(派)<br>Recommended Appointment | 委任(派)<br>Delegated Appointment | 雇 員<br>Employee | 合 計<br>Total | 警 監<br>Police Inspector |
| 民國88年底 1999          | 35 296             | 7 330                             | 62                            | 3 424                            | 3 430                          | 414             | 6 107        | 2                       |
| 民國89年底 2000          | 36 632             | 7 623                             | 59                            | 3 463                            | 3 766                          | 335             | 6 158        | 2                       |
| 民國90年底 2001          | 38 999             | 7 931                             | 66                            | 3 668                            | 3 870                          | 327             | 7 019        | 2                       |

| 年 底 別 及<br>機 關 類 別<br>End of Year & Organization | 總 計<br>Grand Total | 簡 薦 委 任 (派) 人員<br>Ranking Servant |                               |                                  |                                |                 | 警 察 人 員      |                         |
|--|--------------------|-----------------------------------|-------------------------------|----------------------------------|--------------------------------|-----------------|--------------|-------------------------|
|  |                    | 合 計<br>Total                      | 簡任(派)<br>Selected Appointment | 薦任(派)<br>Recommended Appointment | 委任(派)<br>Delegated Appointment | 雇 員<br>Employee | 合 計<br>Total | 警 監<br>Police Inspector |
| 民國91年底 2002                                      | 39 896             | 6 987                             | 73                            | 3 330                            | 3 361                          | 223             | 7 327        | 2                       |
| 民國92年底 2003                                      | 39 611             | 6 814                             | 67                            | 3 350                            | 3 239                          | 158             | 7 388        | 2                       |
| 民國93年底 2004                                      | 39 040             | 6 943                             | 67                            | 3 345                            | 3 394                          | 137             | 7 054        | 3 327                   |
| 民國94年底 2005                                      | 38 377             | 6 975                             | 86                            | 3 300                            | 3 476                          | 113             | 7 054        | 2                       |
| 民國95年底 2006                                      | 38 912             | 6 902                             | 101                           | 3 377                            | 3 334                          | 90              | 7 874        | 2                       |
| 民國96年底 2007                                      | 38 905             | 6 977                             | 111                           | 3 530                            | 3 251                          | 85              | 8 010        | -                       |
| 民國97年底 2008                                      | 39 571             | 7 488                             | 125                           | 3 920                            | 3 364                          | 79              | 8 293        | 10                      |

Table 3-4、Actual Number of Personnel in Taipei County Government & Subsidiaries —by Official Class

Unit:Person

| By Title of Police         |                           | 校長及教師                  |
|----------------------------|---------------------------|------------------------|
| 警 正<br>Police<br>Corrector | 警 佐<br>Police<br>Sergeant | Principal &<br>Teacher |
| 1 569                      | 4 536                     | 21 859                 |
| 1 602                      | 4 554                     | 22 851                 |
| 2 021                      | 4 996                     | 24 049                 |

| By Title of Police         |                           | 醫事人員 Medical Personel |  |   |  |                                      | 校長及教師                  |
|----------------------------|---------------------------|-----------------------|--|---|--|--------------------------------------|------------------------|
| 警 正<br>Police<br>Corrector | 警 佐<br>Police<br>Sergeant | 合 計<br>Total          | 師(一)級<br>First Grade Medical<br>Practitioner | 師(二)級<br>Second Grade<br>Medical Practitioner | 師(三)級<br>Third Grade<br>Medical Practitioner | 士(生)級<br>Medical Practitioner<br>Aid | Principal<br>& Teacher |
| 2 952                      | 4 373                     | 804                   | 1  | 55  | 434  | 314                                  | 24 778                 |
| 3 174                      | 4 212                     | 798                   | 1  | 61  | 454  | 282                                  | 24 611                 |
| 3 327                      | 3 725                     | 844                   | 1  | 67  | 477  | 299                                  | 24 199                 |
| 3 807                      | 3 245                     | 814                   | 1  | 59  | 472  | 282                                  | 23 534                 |
| 3 652                      | 4 220                     | 804                   | 1  | 50  | 483  | 270                                  | 23 332                 |
| 3 594                      | 4 416                     | 798                   | 1  | 48  | 504  | 245                                  | 23 120                 |
| 3 657                      | 4 626                     | 826                   | 1  | 50  | 524  | 251                                  | 22 964                 |

表3-4、本縣各級機關學校公教人員職等別(續)

單位：人

| 年底別及機關類別<br>End of Year & Organization                | 總計<br>Grand Total | 簡薦委任(派)人員 Ranking Servant |                               |                                  |                                |                | 警察人員<br>Police Personnel |                        |
|---|-------------------|---------------------------|-------------------------------|----------------------------------|--------------------------------|----------------|--------------------------|------------------------|
|   |                   | 合計<br>Total               | 簡任(派)<br>Selected Appointment | 薦任(派)<br>Recommended Appointment | 委任(派)<br>Delegated Appointment | 雇員<br>Employee | 合計<br>Total              | 警監<br>Police Inspector |
| 民國98年底 2009   | 40 525            | 8 253                     | 149                           | 4 475                            | 3 558                          | 71             | 8 647                    | 14                     |
| 縣議會<br>County Council                                 | 46                | 46                        | 9                             | 21                               | 14                             | 2              | -                        | -                      |
| 縣政府<br>County Government                              | 18                | 18                        | 18                            | -                                | -                              | -              | -                        | -                      |
| 稅捐稽徵處<br>Department of Tax                            | 462               | 462                       | 1                             | 266                              | 195                            | -              | -                        | -                      |
| 警察局<br>Bureau of Police                               | 7 513             | 203                       | -                             | 85                               | 108                            | 10             | 7 310                    | 9                      |
| 消防局<br>Bureau of fire                                 | 1 456             | 105                       | 1                             | 64                               | 40                             | -              | 1 337                    | 5                      |
| 衛生局及所屬<br>Bureau of Health & Subsidiaries             | 149               | 149                       | 3                             | 100                              | 46                             | -              | -                        | -                      |
| 縣立醫院<br>County Hosipital                              | 219               | 29                        | -                             | 14                               | 14                             | 1              | -                        | -                      |
| 鄉鎮市衛生所<br>Health Offices of Township                  | 362               | 45                        | -                             | 21                               | 24                             | -              | -                        | -                      |
| 環境保護局<br>Bureau of Environmental Sanitation           | 231               | 231                       | 5                             | 148                              | 78                             | -              | -                        | -                      |
| 地政事務所<br>Land Administration Office                   | 479               | 479                       | -                             | 318                              | 161                            | -              | -                        | -                      |
| 戶政事務所<br>Household Registration Office                | 717               | 717                       | -                             | 269                              | 443                            | 5              | -                        | -                      |
| 其他縣屬機關<br>The Other Organic Structure                 | 2 020             | 2 001                     | 62                            | 1 215                            | 723                            | 1              | -                        | -                      |
| 鄉鎮市民代表會<br>Parliament of Township                     | 90                | 90                        | -                             | 54                               | 34                             | 2              | -                        | -                      |
| 鄉鎮市區公所<br>Township Offices                            | 1 931             | 1 931                     | 27                            | 967                              | 935                            | 2              | -                        | -                      |
| 鄉鎮市公所所屬機關<br>The Other Organic Structure of Township  | 491               | 469                       | -                             | 107                              | 315                            | 47             | -                        | -                      |
| 高中(職)<br>Senior High(Vocational)(Combine High School) | 2 641             | 242                       | 23                            | 140                              | 78                             | 1              | -                        | -                      |
| 國民中學<br>Junior High School                            | 6 885             | 498                       | -                             | 314                              | 184                            | -              | -                        | -                      |
| 國民小學(含幼稚園)<br>Elementary Schools                      | 14 815            | 538                       | -                             | 372                              | 166                            | -              | -                        | -                      |

資料來源：行政院人事行政局地方人事行政處。

Table3-4、Actual Number of Personnel in Taipei County Government & Subsidiaries—by Official Class(Cont)

Unit:Person

| By Title of Police        |                          | 醫事人員 Medical Personel |   |  |   |   | 校長及教師<br>Principal & Teacher |
|---------------------------|--------------------------|-----------------------|---|--|---|---|------------------------------|
| 警正<br>Police<br>Corrector | 警佐<br>Police<br>Sergeant | 合計<br>Total           | 師(一)級<br>First Grade<br>Medical<br>Practitioner | 師(二)級<br>Second Grade<br>Medical<br>Practitioner | 師(三)級<br>Third Grade<br>Medical<br>Practitioner | 士(生)級<br>Medical<br>Practitioner<br>Aid |                              |
| 3 634                     | 4 999                    | 895                   | 1   | 49   | 586   | 259                                     | 22 730                       |
| -                         | -                        | -                     | -   | -  | -   | -                                       | -                            |
| -                         | -                        | -                     | -   | -  | -   | -                                       | -                            |
| 3 285                     | 4 016                    | -                     | -   | -  | -   | -                                       | -                            |
| 349                       | 983                      | 14                    | -   | -  | 9   | 5                                       | -                            |
| -                         | -                        | -                     | -   | -  | -   | -                                       | -                            |
| -                         | -                        | 190                   | 1   | 33   | 104   | 52                                      | -                            |
| -                         | -                        | 317                   | -   | 16   | 186   | 115                                     | -                            |
| -                         | -                        | -                     | -   | -  | -   | -                                       | -                            |
| -                         | -                        | -                     | -   | -  | -   | -                                       | -                            |
| -                         | -                        | 19                    | -   | -  | 8   | 11                                      | -                            |
| -                         | -                        | -                     | -   | -  | -   | -                                       | -                            |
| -                         | -                        | -                     | -   | -  | -   | -                                       | -                            |
| -                         | -                        | 25                    | -   | -  | 25  | -                                       | 2 374                        |
| -                         | -                        | 69                    | -   | -  | 56  | 13                                      | 6 318                        |
| -                         | -                        | 239                   | -   | -  | 198   | 41                                      | 14 038                       |

Source：Central Personnel Administration Department of Local Personnel Affairs, Executive Yuan

表3 - 5、本縣各級機關學校公教人員學歷

單位:人

| 年底別及機關類別<br>End of Year & Organization | 總計<br>Grand Total | 博士<br>Doctor | 碩士<br>Master |
|--|-------------------|--------------|--------------|
| 民國88年底 1999                            | 35 296            | 7            | 1 308        |

| 年底別及機關類別<br>End of Year & Organization              | 總計<br>Grand Total | 博士<br>Doctor | 碩士<br>Master |
|---|-------------------|--------------|--------------|
| 民國89年底 2000   | 36 632            | 16           | 1 961        |
| 民國90年底 2001   | 38 999            | 26           | 1 985        |
| 民國91年底 2002   | 39 896            | 17           | 2 239        |
| 民國92年底 2003   | 39 611            | 18           | 2 668        |
| 民國93年底 2004   | 39 040            | 17           | 3 180        |
| 民國94年底 2005   | 38 377            | 21           | 3 651        |
| 民國95年底 2006   | 38 912            | 38           | 4 209        |
| 民國96年底 2007   | 38 905            | 39           | 4 799        |
| 民國97年底 2008   | 39 571            | 63           | 5 809        |
| <b>民國98年底 2009</b>                                  | <b>40 525</b>     | <b>75</b>    | <b>6 980</b> |
| 縣議會 County Council                                  | 46                | -            | 8            |
| 縣政府 County Government                               | 18                | 3            | 10           |
| 稅捐稽徵處 Department of Tax                             | 462               | -            | 31           |
| 警察局 Bureau of Police                                | 7 513             | 3            | 169          |
| 消防局 Bureau of fire                                  | 1 456             | 1            | 50           |
| 衛生局及所屬 Bureau of Health & Subsidiaries              | 149               | 1            | 51           |
| 縣立醫院 County Hosipital                               | 219               | 1            | 18           |
| 鄉鎮市衛生所 Health Offices of Township                   | 362               | 1            | 23           |
| 環境保護局 Bureau of Environmental Sanitation            | 231               | 1            | 109          |
| 地政事務所 Land Administration Office                    | 479               | -            | 76           |
| 戶政事務所 Household Registration Office                 | 717               | -            | 23           |
| 其他縣屬機關 The Other Organic Structure                  | 2 020             | 8            | 698          |
| 鄉鎮市民代表會 Parliament of Township                      | 90                | -            | 6            |
| 鄉鎮市區公所 Township Offices                             | 1 931             | 2            | 199          |
| 鄉鎮市公所所屬機關 The Other Organic Structure of Township   | 491               | -            | 13           |
| 高中(職) Senior High(Vocational) (Combine High School) | 2 641             | 11           | 953          |
| 國民中學 Junior High School                             | 6 885             | 10           | 1,463        |
| 國民小學(含幼稚園) Elementary Schools                       | 14 815            | 33           | 3,080        |

資料來源：行政院人事行政局地方人事行政處。

Table 3 - 5、Actual Number of Personnel in Taipei County Government

& Subsidiaries by Educational Attainment<sup>1</sup> Unit:Person

| 大學畢業<br>(含軍警校有學位)<br>University(Include Academic Degree of Military & Police school) | 專科畢業<br>Junior College | 高中(職)畢業<br>Senior High (Vocational)School | 國(初)中以下<br>Jnior High (Vocational) School | 軍警校<br>(無學位者)<br>Military &Police School (Non-academic Degree) |
|--|------------------------|---|---|--|
| 20 860   | 7 115                  | 1 827                                     | 131                                       | 4 048  |

| 大學畢業(含軍警校有學位)<br>University(Include Academic Degree of Military & Police school) | 專科畢業<br>Junior College | 高中(職)畢業<br>Senior High (Vocational)School | 國(初)中以下<br>Jnior High (Vocational) School |
|--|------------------------|---|---|
| 25 130   | 7 228                  | 2 185                                     | 112                                       |
| 23 114   | 8 151                  | 5 638                                     | 85  |
| 24 217   | 7 646                  | 5 710                                     | 67  |
| 24 225   | 7 643                  | 5 008                                     | 49  |
| 24 142   | 7 047                  | 4 607                                     | 47  |
| 23 527   | 6 865                  | 4 273                                     | 40  |
| 23 331   | 7 310                  | 3 996                                     | 28  |
| 23 088   | 7 274                  | 3 677                                     | 28  |
| 22 915   | 7 284                  | 3 472                                     | 28  |
| <b>22 725</b>  | <b>7 438</b>           | <b>3 271</b>                              | <b>36</b>                                 |
| 20   | 10                     | 7   | 1   |
| 5  | -                      | -   | -   |
| 308  | 113                    | 10  | -   |
| 1 494  | 3 679                  | 2 163                                     | 5   |
| 223  | 995                    | 187                                       | -   |
| 60   | 35                     | 2   | -   |
| 120  | 74                     | 6   | -   |
| 225  | 97                     | 16  | -   |
| 74   | 39                     | 8   | -   |
| 255  | 88                     | 57  | 3   |
| 318  | 248                    | 121                                       | 7   |
| 1 003  | 238                    | 72  | 1   |
| 31   | 28                     | 25  | -   |
| 785  | 612                    | 322                                       | 11  |
| 147  | 206                    | 124                                       | 1   |
| 1 550  | 107                    | 20  | -   |
| 5 103  | 252                    | 56  | 1   |
| 11 004   | 617                    | 75  | 6   |

Source : Central Personnel Administration Department of Local Personnel Affairs , Executive Yuan

表 3 - 6、本縣各級機關學校公教人員按性別及年齡分

單位：人

| 年底別<br>End of Year | 總 計<br>Grand Total | 性別<br>Sex |             | 年                            |                       |                      |
|--------------------|--------------------|-----------|-------------|------------------------------|-----------------------|----------------------|
|                    |                    | 男<br>Male | 女<br>Female | 平均年齡(歲)<br>Average Age(year) | 20-24歲<br>20~24 Years | 25-29歲<br>25~29Years |
| 民國88年底 1999        | 35 296             | 15 799    | 19 497      | 37.00                        | 1 462                 | 7 872                |
| 民國89年底 2000        | 36 632             | 16 135    | 20 497      | 37.29                        | 1 699                 | 7 444                |
| 民國90年底 2001        | 38 999             | 17 074    | 21 925      | 37.42                        | 1 482                 | 7 785                |
| 民國91年底 2002        | 39 896             | 17 462    | 22 434      | 37.70                        | 1 368                 | 7 623                |
| 民國92年底 2003        | 39 611             | 17 412    | 22 199      | 37.86                        | 1 202                 | 6 909                |
| 民國93年底 2004        | 39 040             | 16 974    | 22 066      | 37.72                        | 1 208                 | 6 315                |
| 民國94年底 2005        | 38 377             | 16 710    | 21 667      | 38.26                        | 918                   | 5 379                |
| 民國95年底 2006        | 38 912             | 17 358    | 21 554      | 38.40                        | 1 334                 | 5 133                |
| 民國96年底 2007        | 38 905             | 17 388    | 21 517      | 38.40                        | 1 506                 | 4 747                |
| 民國97年底 2008        | 39 571             | 17 772    | 21 799      | 39.12                        | 1 581                 | 4 310                |

資料來源：本府人事處

Table 3-6、Actual Number of Personnel in Taipei County Government & Subsidiaries-by Educational Attainment

Unit:Person

| 齡                    |                      |                      |                      |                      |                      |                      |                                   |
|----------------------|----------------------|----------------------|----------------------|----------------------|----------------------|----------------------|-----------------------------------|
| Age                  |                      |                      |                      |                      |                      |                      |                                   |
| 30-34歲<br>30~34Years | 35-39歲<br>35~39Years | 40-44歲<br>40~45Years | 45-49歲<br>45~49Years | 50-54歲<br>50~54Years | 55-59歲<br>55~59Years | 60-64歲<br>60~64Years | 65歲以上<br>65 Years Of Age and Over |
| 7 267                | 6 544                | 4 986                | 4 085                | 1 946                | 801                  | 320                  | 13                                |
| 7 652                | 6 698                | 5 287                | 4 390                | 2 196                | 918                  | 344                  | 4                                 |
| 8 617                | 7 190                | 5 399                | 4 677                | 2 566                | 877                  | 371                  | 35                                |
| 8 827                | 7 321                | 5 696                | 4 742                | 3 138                | 761                  | 398                  | 22                                |
| 8 938                | 7 638                | 6 000                | 4 770                | 3 214                | 680                  | 237                  | 23                                |
| 9 051                | 7 908                | 6 379                | 4 991                | 2 313                | 669                  | 190                  | 16                                |
| 8 685                | 8 211                | 6 669                | 5 239                | 2 392                | 707                  | 162                  | 15                                |
| 8 302                | 8 269                | 6 970                | 5 330                | 2 582                | 805                  | 176                  | 11                                |
| 7 699                | 8 356                | 7 204                | 5 529                | 2 745                | 923                  | 187                  | 9                                 |
| 7 584                | 8 367                | 7 515                | 5 912                | 3 032                | 1 039                | 215                  | 16                                |

Source : Personal Office



表 3 - 6、本縣各級機關學校公教人員按性別及年齡分(續)

單位：人

| 年底別及機關類別<br>End of Year & Organization             | 總計<br>Grand Total | 性別<br>Sex     |               | 年<br>Age                     |                       |
|--|-------------------|---------------|---------------|------------------------------|-----------------------|
|  |                   | 男<br>Male     | 女<br>Female   | 平均年齡(歲)<br>Average Age(year) | 20-24歲<br>20~24 Years |
| 民國98年底 2009  | <b>40 525</b>     | <b>18 244</b> | <b>22 281</b> | <b>39.48</b>                 | <b>1 645</b>          |
| 縣議會 County Council                                 | 46                | 24            | 22            | 47.83                        | -                     |
| 縣政府 County Government                              | 18                | 14            | 4             | 52.78                        | -                     |
| 稅捐稽徵處 Department of Tax                            | 462               | 109           | 353           | 39.89                        | 14                    |
| 警察局 Bureau of Police                               | 7 513             | 7 017         | 496           | 36.32                        | 1 060                 |
| 消防局 Bureau of fire                                 | 1 456             | 1 318         | 138           | 30.82                        | 376                   |
| 衛生局及所屬 Bureau of Health & Subsidiaries             | 149               | 26            | 123           | 37.00                        | 3                     |
| 縣立醫院 County Hospital                               | 219               | 76            | 143           | 41.36                        | 2                     |
| 鄉鎮市衛生所 Health Offices of Township                  | 362               | 56            | 306           | 39.17                        | 1                     |
| 環境保護局 Bureau of Environmental Sanitation           | 231               | 132           | 99            | 39.25                        | 1                     |
| 地政事務所 Land Administration Office                   | 479               | 229           | 250           | 39.10                        | 11                    |
| 戶政事務所 Household Registration Office                | 717               | 182           | 535           | 41.57                        | 6                     |
| 其他縣屬機關 The Other Organic Structure                 | 2 020             | 993           | 1 027         | 37.66                        | 52                    |
| 鄉鎮市民代表會 Parliament of Township                     | 90                | 47            | 43            | 48.11                        | -                     |
| 鄉鎮市區公所 Township Offices                            | 1 931             | 1 009         | 922           | 44.00                        | 22                    |
| 鄉鎮市公所所屬機關 The Other Organic Structure of Township  | 491               | 107           | 384           | 47.09                        | 4                     |
| 高中(職) Senior High(Vocational)(Combine High School) | 2 641             | 818           | 1 823         | 41.18                        | 21                    |
| 國民中學 Junior High School                            | 6 885             | 1 834         | 5 051         | 40.70                        | 39                    |
| 國民小學(含幼稚園) Elementary Schools                      | 14 815            | 4 253         | 10 562        | 40.27                        | 33                    |

Table 3-6、Actual Number of Personnel in Taipei County Government & Subsidiaries-by Educational Attainment (Cont.)

Unit:Person

| 齡<br>Age             |                      |                      |                      |                      |                      |                      |                      |                                   |
|----------------------|----------------------|----------------------|----------------------|----------------------|----------------------|----------------------|----------------------|-----------------------------------|
| 25-29歲<br>25~29Years | 30-34歲<br>30~34Years | 35-39歲<br>35~39Years | 40-44歲<br>40~44Years | 45-49歲<br>45~49Years | 50-54歲<br>50~54Years | 55-59歲<br>55~59Years | 60-64歲<br>60~64Years | 65歲以上<br>65 Years Of Age and Over |
| <b>4 089</b>         | <b>7 566</b>         | <b>8 325</b>         | <b>7 695</b>         | <b>6 353</b>         | <b>3 409</b>         | <b>1 159</b>         | <b>273</b>           | <b>11</b>                         |
| -                    | 5                    | 4                    | 5                    | 12                   | 11                   | 7                    | 2                    | -                                 |
| -                    | -                    | -                    | 2                    | 1                    | 11                   | 2                    | 2                    | -                                 |
| 65                   | 88                   | 76                   | 76                   | 51                   | 69                   | 19                   | 4                    | -                                 |
| 1 230                | 935                  | 1 689                | 1 185                | 826                  | 413                  | 144                  | 29                   | 2                                 |
| 466                  | 283                  | 116                  | 91                   | 83                   | 24                   | 16                   | 1                    | -                                 |
| 19                   | 47                   | 39                   | 21                   | 8                    | 7                    | 4                    | 1                    | -                                 |
| 10                   | 52                   | 42                   | 43                   | 29                   | 22                   | 15                   | 4                    | -                                 |
| 29                   | 101                  | 98                   | 51                   | 34                   | 30                   | 16                   | 2                    | -                                 |
| 31                   | 60                   | 45                   | 29                   | 34                   | 17                   | 12                   | 2                    | -                                 |
| 80                   | 108                  | 85                   | 58                   | 49                   | 59                   | 24                   | 5                    | -                                 |
| 71                   | 102                  | 135                  | 140                  | 125                  | 103                  | 29                   | 5                    | 1                                 |
| 424                  | 448                  | 379                  | 253                  | 213                  | 175                  | 66                   | 10                   | -                                 |
| 2                    | 2                    | 5                    | 18                   | 28                   | 19                   | 14                   | 2                    | -                                 |
| 136                  | 230                  | 253                  | 309                  | 406                  | 387                  | 145                  | 39                   | 4                                 |
| 11                   | 26                   | 70                   | 72                   | 102                  | 125                  | 55                   | 25                   | 1                                 |
| 195                  | 422                  | 551                  | 612                  | 457                  | 259                  | 104                  | 20                   | -                                 |
| 546                  | 1 367                | 1 355                | 1 308                | 1 399                | 645                  | 190                  | 35                   | 1                                 |
| 774                  | 3 290                | 3 383                | 3 422                | 2 496                | 1 033                | 297                  | 85                   | 2                                 |